



www.insize.com

INSIZE

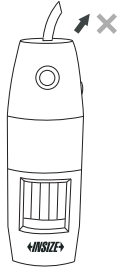


**ISM-PM600SB High Magnification
Digital Microscope
OPERATION MANUAL**



Attention

1. The USB power supply voltage to microscope should be $5V \pm 0.1V$. When voltage is lower, the microscope may not work.
2. When microscope is not in use, please install lens protection cover to protect the lens.
3. Don't pull the cable.



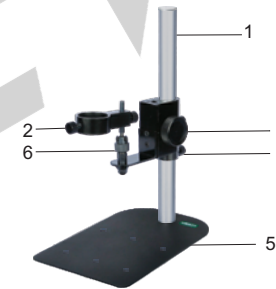
4. Use the button the software in order to take clear pictures. When using the button on the microscope to take pictures, the microscope may shake and the pictures may be blurred.
5. After using the microscope, please turn off the power of microscope before pull it from the computer USB port.

1 Description

ISM-PM600SB can be used for observation, photograph, video, measurement and analysis. It is connected to computer via USB port, and comes with software ISM-PRO.

2 Description of each part

2.1 Stand



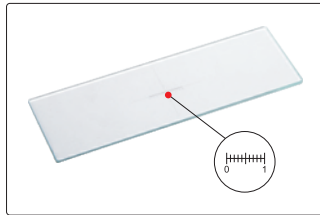
- 1 Column
- 2 Locking screw
- 3 Focus adjustment
- 4 Fix ring
- 5 Base
- 6 Universal head

2.2 Digital microscope



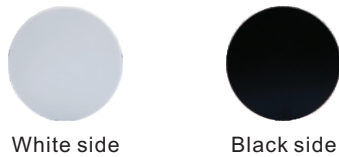
- 1 Take picture
- 2 Illumination adjustment
- 3 Magnification adjustment
- 4 Magnification indication
- 5 Lens protection cover

2.3 Calibration rule



Calibration rule (graduation 0.1mm)

2.4 White/black plate



Please use white/black plate in order to observe objects clearly. Put the white objects on black side of plate and put black objects on the white side of plate.

3 Using digital microscope with the stand

3.1 Install the stand as follows:



- 1 Install column
- 2 Install fix ring
- 3 Install lifting device

3.2 Take off the lens protection cover. Insert the digital microscope into the hole and fix it with the locking screw. Let the magnification indication face to you.



3.3 Connect the microscope to the computer USB port, and turn on it as the below picture. Run the software, the image will appear on the computer screen.



3.4 Read the magnification indication. For example, the magnification is 500X in fig.1. The magnification is 600X in fig.2.



fig.1



fig.2

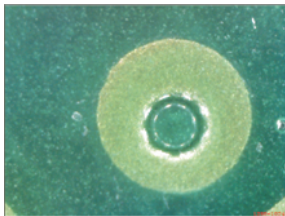
3.5 The below table shows the relationship among magnification, focus distance and view field.

Magnification	Focus distance	View field
450X	1.4mm	0.85×0.67
475X	4.1mm	0.80×0.63
500X	5.5mm	0.76×0.61
525X	6.9mm	0.74×0.54
550X	8.6mm	0.69×0.55
600X	11.5mm	0.63×0.51

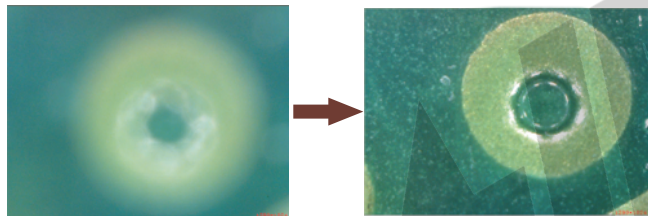
3.6 Choose view filed and adjust magnification

Move the white/black plate to let the object be in the view filed. In order to get high magnification, please adjust the magnification gradually.

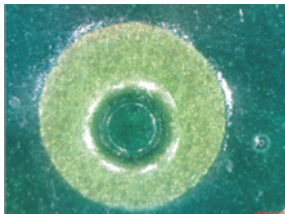
a Put the object under the microscope and set the magnification at low value. Rotate the focus adjustment to focus the object.



b Increase the magnification, the image will be blurred. Rotate the focus adjustment to focus the object again.



c Repeat step b, until the object is full of the view field.



5 Specification

Magnification	450X-600X
Pixel	1.3M (resolution: 1280x1024)
Illumination	built-in adjustable LED
Power supply	USB 2.0 cable (voltage required: 5±0.1V)

6 Standard delivery

Digital microscope	1pc
Universal Stand	1pc
White/black plate	1pc
Lens protection cover	1pc
Calibration rule (graduation 0.1mm)	1pc
Software disc	1pc