

**←INSIZE→**  
www.insize.com

←INSIZE→



**ISF-MT1K  
TESTING STAND  
OPERATION MANUAL**

**←INSIZE→**

## Introduction

This Testing Stand is specially designed for ISF-DF2~1000A series force gages. It is widely used in various industries and research institutions for tension and compression test, insertion force, failure test.

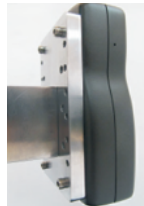
- ◆ Load capacity: 1000N.
- ◆ Travel: 200mm, 3mm vertical movement per revolution.
- ◆ Dimension: 196x250x446mm.
- ◆ Weight: 13kg.

## Structure

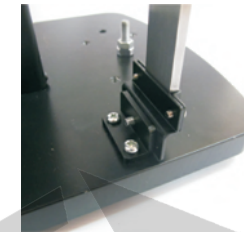


## Installation

- ① Install the force gage: Use 4 screws to fit the force gage onto the testing stand.



- ② Install the digital scale(optional): Please refer to the following pictures and use the accessories to fit the scale.



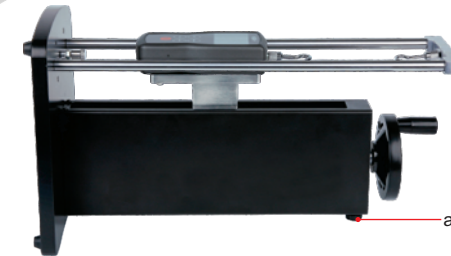
bottom



back

## Usage

The stand can work in two modes: tensile and compression. Rotate the handwheel to move the force gage. It also can work in two directions: vertical and horizontal.



horizontal test

adjusting screw

## Maintenance

- ① Don't use the stand overloaded, the load capacity is 1000N.
- ② Keep clean of the testing stand.
- ③ When the movement of the stand is not smooth, please add a few lubrication oil on the guide rod. If you have problems, please contact us.